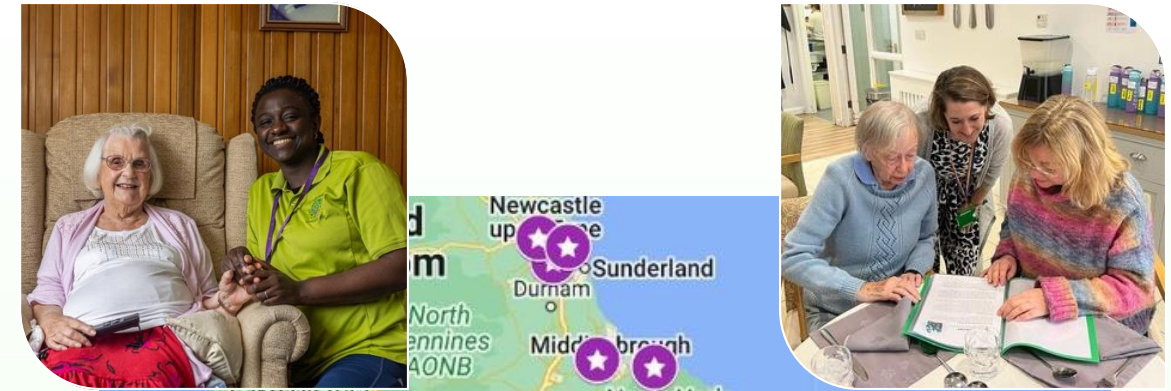




VIVALDI Social Care Stakeholder, Oversight and Governance Group (SOGG)

Meeting 5
4th Feb 2024

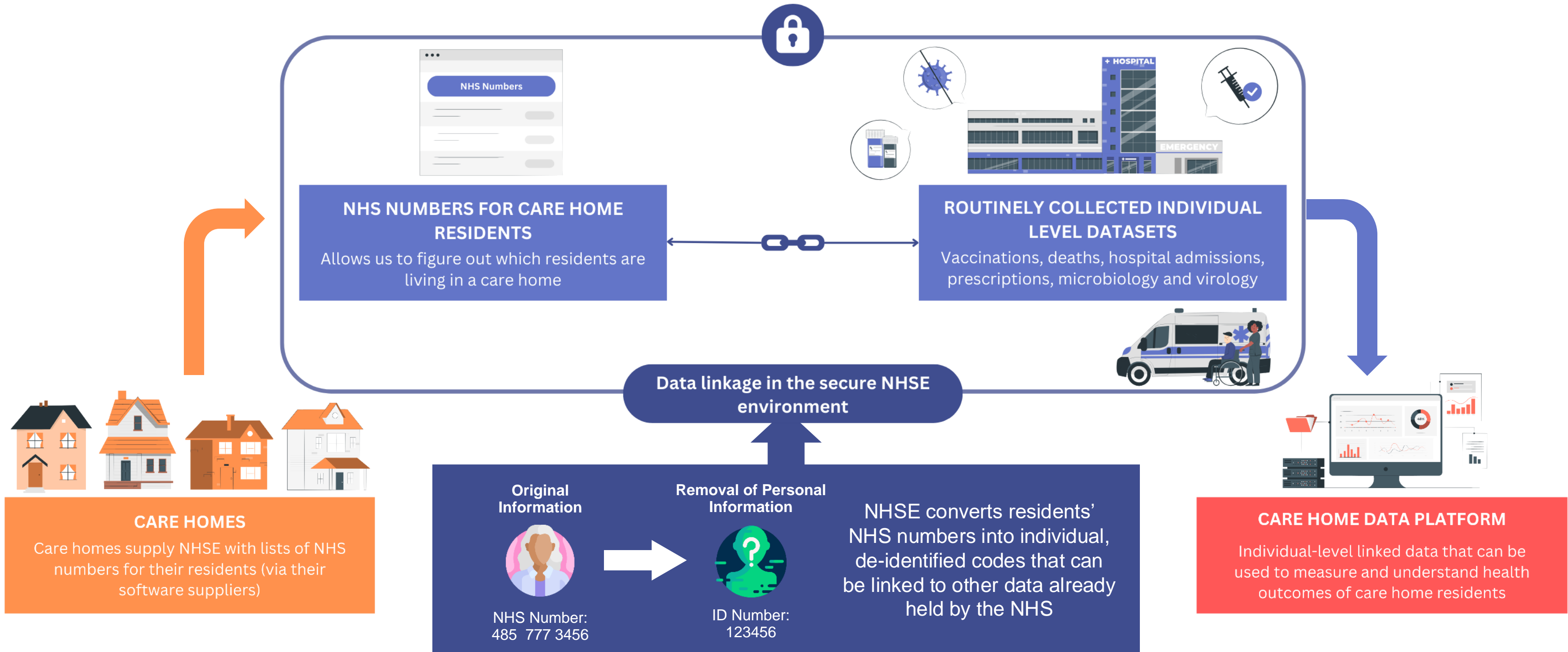


Funded by:

Agenda

- Welcome
- Progress update (Laura & Zoe)
- Update on dashboards and benchmarking (Laura)
- Next 12 months (pilot)
- Beyond 12 months
- AOB

Recap on how and where the data is linked



Progress summary

Information Governance (next 4-8 weeks)

- Joint Data controller agreement (UCL/OS/CE) ✓
- Data sharing agreements between Providers and UCL ✓
- Data Processing Agreement between UCL, NHSE, Quantaim Ltd ✓
- HRA CAG approval ✓
- NHS Research Ethics approval ✓
- Data Sharing Agreement between NHSE and UCL (DARS process) ✓
- Security assurance processes for the OS and CE
- Sign off by the Advisory Group for Data ✓

Technical Project requirements (by January 2025)

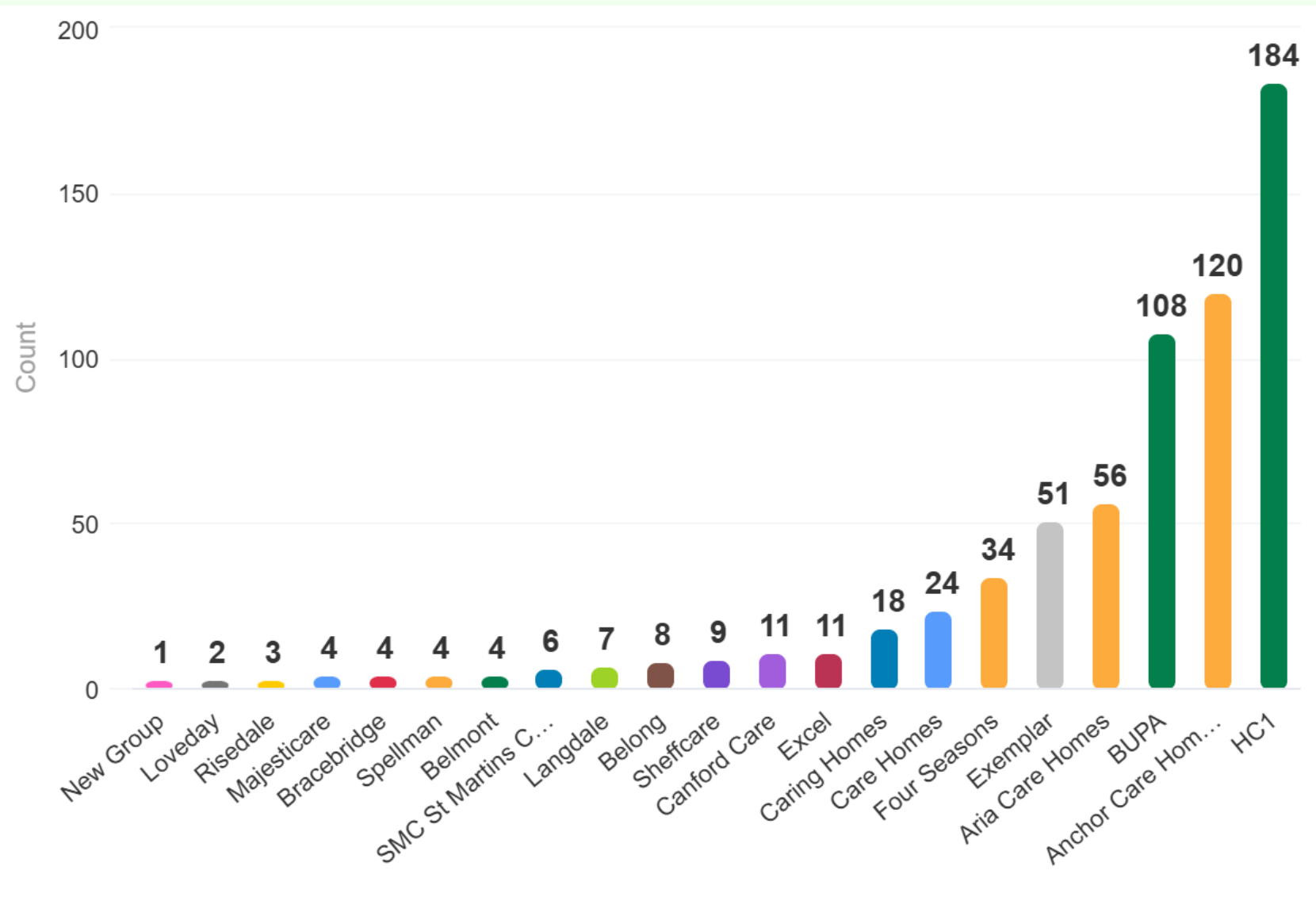
- NHSE confirm which data environment will host the dataset ✓
- Confirmation of the mailbox to ingest data from Providers ✓
- Provider 'go live' date = 27th Jan ✓
- Data linkage process and documentation ✓
- Data extraction processes
 - UCL – individual-level data ✓
 - UKHSA – care home level data

CAG renewed project approvals for the next 12 months

Funded by:



No. of homes onboarded And Completed Training	668
No. of care home beds	36,361 - 7.8%

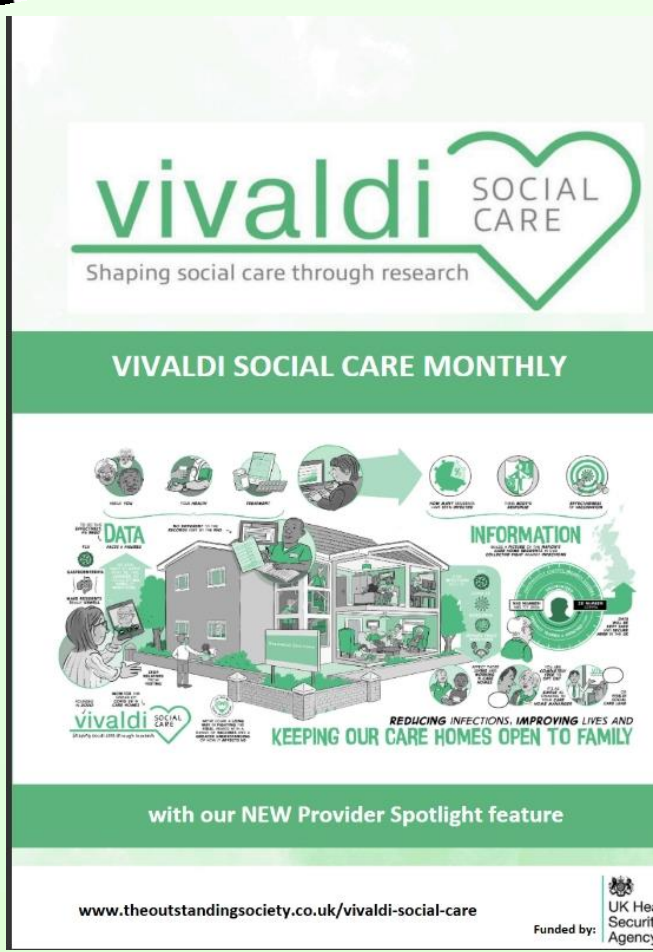
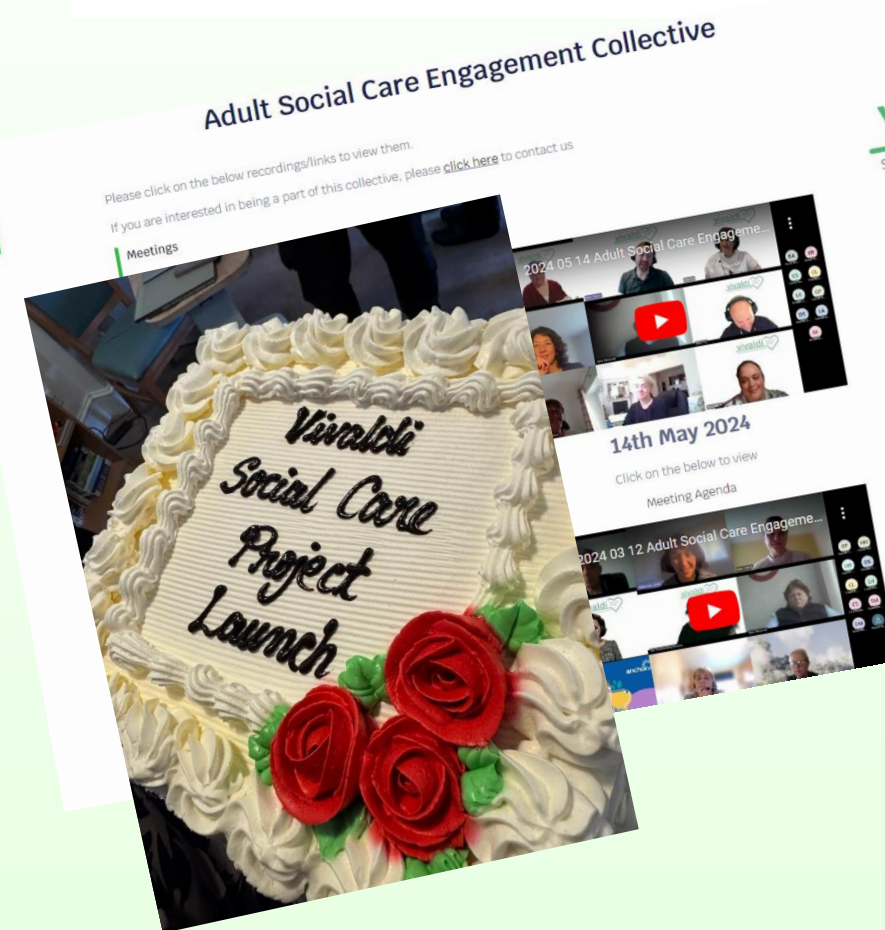


Funded by: UK Health Security Agency

Adult Social Care Engagement Collective



- ASCEC Members
- Care Home Visits
- Relatives Meetings
- VIVALDI Social Care [Newsletter](#)
- Videos – capturing evidence
- Quotes
- CQC



Funded by:

Dashboards and benchmarking

Care home level data will be shared from the UCL Data Safe Haven to create dashboards

1st analyses:

- Care home versus all care homes in the dataset
- Care home versus all care homes in the same region
- These analyses will be accompanied by a detailed explanation of why it is difficult to compare care homes

Work towards a benchmarking approach e.g. comparing care homes to the 20 most similar care homes

- Which characteristics are most important to do this well?
- Provider type and funding
- Care home size
- Resident population
- Geographical region e.g. rural / urban etc.
- Establishing a dashboard oversight group with a T&F group to create version 1 benchmarks.
- Who should be in this group? Any thoughts on how to do this well?

Funded by:



UK Health
Security
Agency

Future (next 12 months)

Next 12 months

- Version 1 dashboards
- Research outputs
 - Infection and AMR
 - Who is in a care home
 - How do residents interact with hospitals? hospital?
- Grant application for a clinical trial
- Scope out what the next version of the study will look like and who will fund it
- Collaboration with the NIHR Research Delivery Network (RDN) to start building research capacity in care homes
- **Continued and expanded programme of engagement and involvement led by the OS**

Future plans: Programme of research in care homes



ADULT SOCIAL CARE ENGAGEMENT COLLECTIVE

Monitors feedback from care homes throughout the study. 4-6 members of this group also sit on the DAC and SOGG.

Research training & capacity building for social care workforce

- Research**
- Clinical trials
 - Public health research
 - Basic science e.g. ageing
 - Datascience / AI tools

Surveillance
Data-driven quality improvement and policy

Occupational health outcomes in social care workers

Engagement & advocacy
Raise awareness of social care
Empower sector

- 1) Improved care quality and outcomes for residents (and staff)
- 2) New career pathways for care home staff
- 3) Improved awareness of the nature and role of social care among policymakers & the public

AOB

