



VIVALDI Social Care Stakeholder, Oversight and Governance Group (SOGG)

Meeting 4
12th Nov 2024



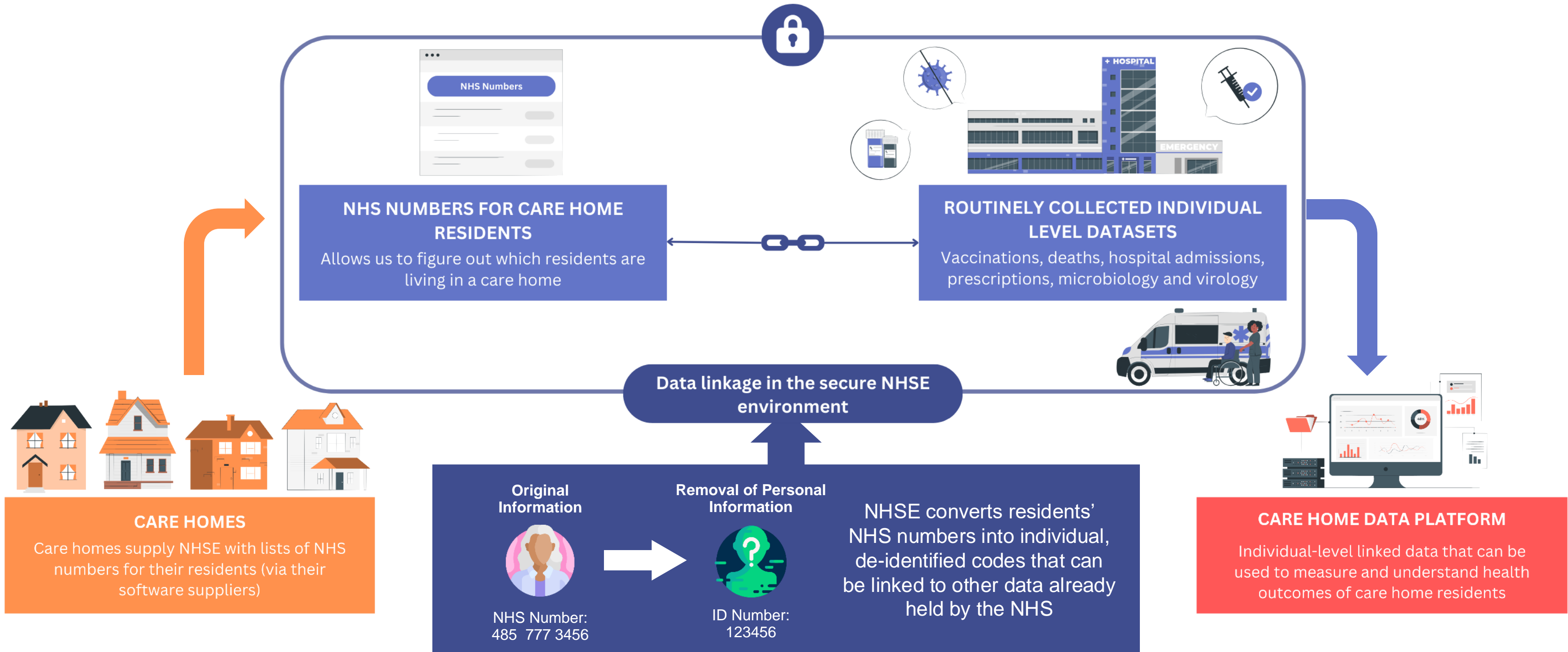
Agenda

- Welcome
- Progress update (Laura & Zoe)
- Update on data linkage (Laura)
- Progress reporting to CAG (Laura)
- Future plans (All)
- AOB



Progress update

Recap on how and where the data is linked



Progress summary

Information Governance (next 4-8 weeks)

- Joint Data controller agreement (UCL/OS/CE) ✓
- Data sharing agreements between Providers and UCL ✓
- Data Processing Agreement between UCL, NHSE, Quantaim Ltd ✓
- HRA CAG approval ✓
- NHS Research Ethics approval ✓
- **Data Sharing Agreement between NHSE and UCL (DARS process)**
- **Security assurance processes for the OS and CE**
- **Sign off by the Advisory Group for Data**
(<https://digital.nhs.uk/about-nhs-digital/corporate-information-and-documents/advisory-group-for-data>)

Technical Project requirements (by January 2025)

- **NHSE confirm which data environment will host the dataset**
- **Confirmation of the mailbox to ingest data from Providers**
- **Provider 'go live' date**
- **Data linkage process and documentation**
- **Data extraction processes**
 - UCL – individual-level data
 - UKHSA – care home level data

Funded by:



UK Health
Security
Agency

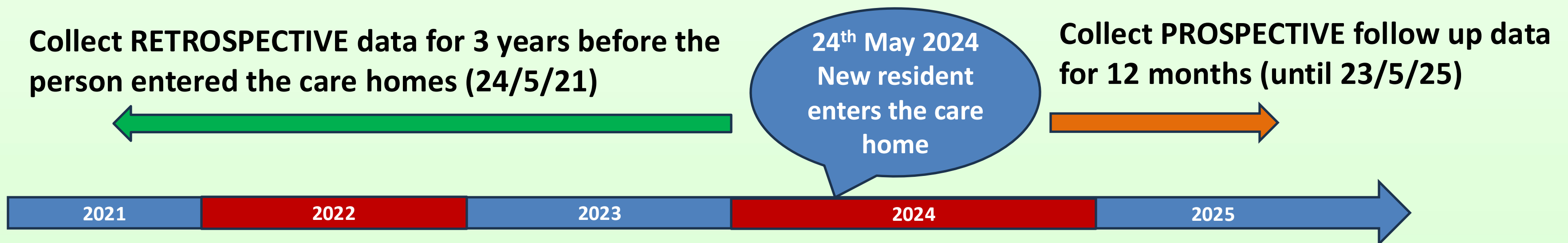
Update on data linkage

Original plan: link data for 12 months from study start

- Rates of infection and AMR in residents e.g. antibiotic prescriptions, hospital admissions for infection etc.

Feedback from ASCEC and policymakers

- What happens to people (in terms of healthcare contact) before they enter the care home?
- How many hospital admissions do residents have in the final year of life?
- We should use our data to improve understanding of the care home population (e.g. age, sex, how long residents are in a care home, their underlying illnesses, healthcare use etc.)
- To answer these questions we need **retrospective** data as well as **prospective** data





Progress reporting to CAG

A condition of ongoing CAG approval for the project is provision of annual progress reports

CAG also asked us to “Increase the number of care home residents in further patient and public involvement undertaken over the next year and report these discussions to CAG at annual review.”

- Regular care home visits
- Online training
- Drop in sessions
- Presentations at events e.g. Care show, SNACs, nursing live etc.

- 2 residents have now opted out of data collection

- **Anything else we should be doing to check that residents remain happy with our approach?**

Future plans: Programme of research in care homes



ADULT SOCIAL CARE ENGAGEMENT COLLECTIVE

Monitors feedback from care homes throughout the study. 4-6 members of this group also sit on the DAC and SOGG.

Research training & capacity building for social care workforce

- Research**
- Clinical trials
 - Public health research
 - Basic science e.g. ageing
 - Datascience / AI tools

Surveillance
Data-driven quality improvement and policy

Occupational health outcomes in social care workers

Engagement & advocacy
Raise awareness of social care
Empower sector

- 1) Improved care quality and outcomes for residents (and staff)
- 2) New career pathways for care home staff
- 3) Improved awareness of the nature and role of social care among policymakers & the public